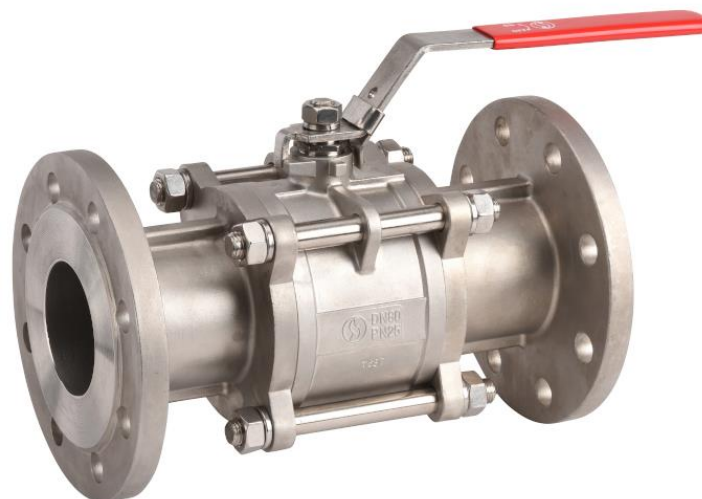


3 PIECES STAINLESS STEEL BALL VALVE FLANGED PN40 INITIAL RANGE

3 pieces stainless steel ball valve with full bore for Chemical industries, petrochemical industries, hydraulic installation, heating, water distribution, compressed air.
PTFE packing and gasket, PTFE filled with 15% glass seat.

Certificate
3.1


Lloyd's
Register
PED/2014/68/UE



Size : DN15 to DN100
Connection : Flanged PN40 RF
Min Temperature : -20°C
Max Temperature : +180°C
Max Pressure : 40 bars
Specifications : 3 pieces type
PTFE filled with 15% glass seat
Anti blow-out stem
Full bore

Materials : Stainless Steel ASTM A351 CF8M

3 PIECES STAINLESS STEEL BALL VALVE FLANGED PN40 INITIAL RANGE

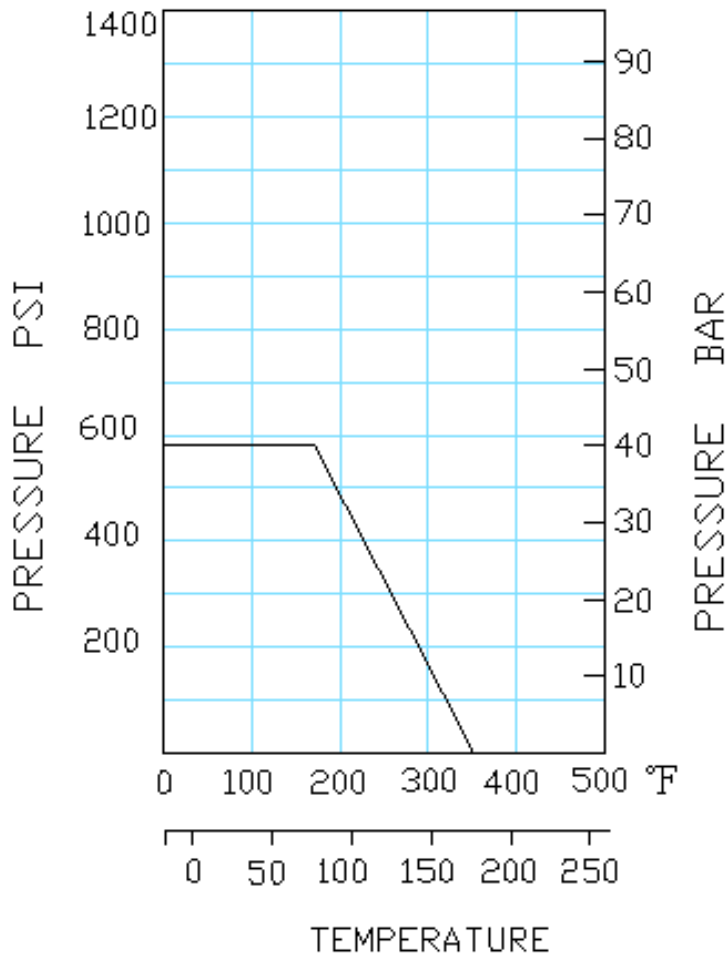
SPECIFICATIONS :

- Full bore
- Anti blow-out stem
- PTFE packing
- PTFE filled with 15% glass fiber seat
- Locking device
- 3 pieces type
- PN40 R.F. flanges
- Black phosphated finish, thickness 5 µm

USE :

- Chemical industries, petrochemical industries, hydraulic installation, heating, water distribution, compressed air
- Min and max Temperature Ts : -20°C to + 180°C
- Max Pressure Ps : 40 bars (see graph)

PRESSURE / TEMPERATURE GRAPH (STEAM EXCLUDED) :



3 PIECES STAINLESS STEEL BALL VALVE FLANGED PN40 INITIAL RANGE

TORQUE VALUES (in Nm without safety coefficient) :

DN	15	20	25	32	40	50	65	80	100
Torque (Nm)	2.5	3.5	6	7	12	16	40	50	70

BOLT TIGHTENING TABLE (In Nm) :

DN	15	20	25	32	40	50	65	80	100
Torque (Nm)	15	18	20	20	28	28	35	45	65

FLOW COEFFICIENT Kvs (in m3 / h) :

DN	15	20	25	32	40	50	65	80	100
Kvs (m3 / h)	20.7	30.2	40.6	70	90.8	208.4	275.9	501.6	865

RANGE :



- 3 pieces stainless steel ball valve with flanges **Ref. 731** from DN 15 to DN 100



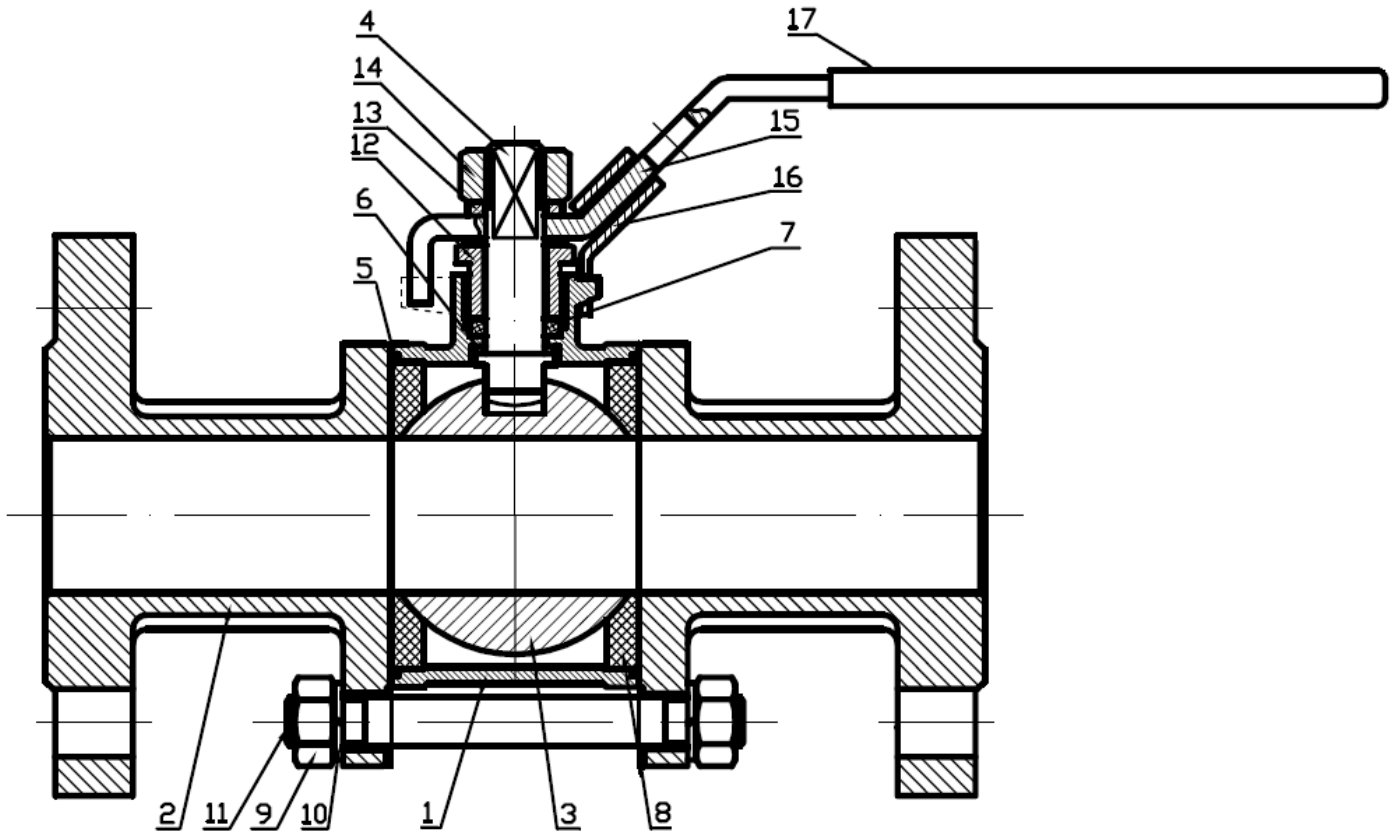
- AISI 304 stem extension **Ref.9810612-9810614** from DN15 to DN50

CONNECTION :

- Flanges R.F. PN40

3 PIECES STAINLESS STEEL BALL VALVE FLANGED PN40 INITIAL RANGE

MATERIALS :

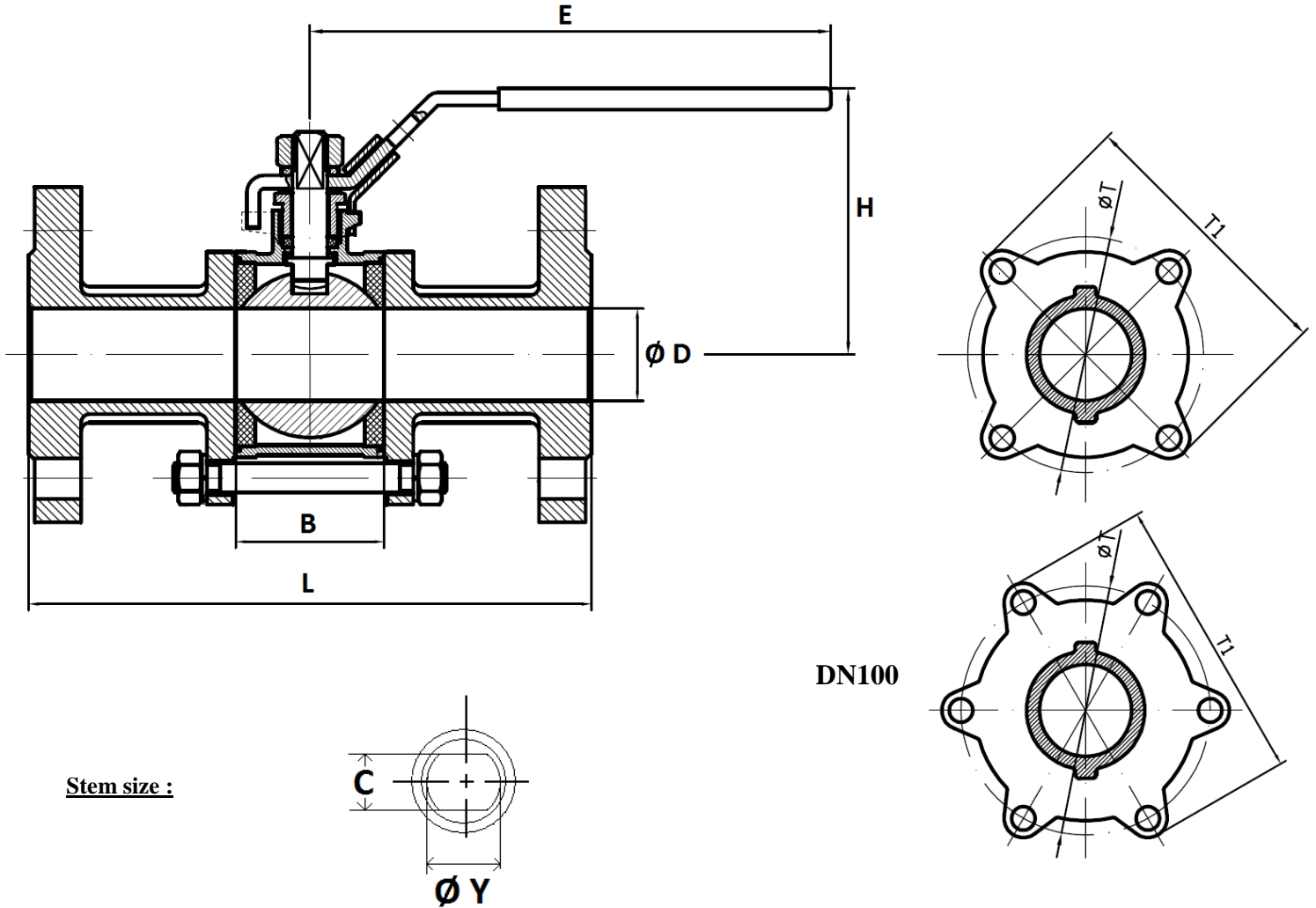


(* : Included in gaskets kit)

Item	Designation	Materials
1	Body	ASTM A351 CF8M
2	Ends	
3	Ball	AISI 316
4	Stem	PTFE
5*	Body gasket	
6*	Stem gasket	
7*	Packing	PTFE filled with 15% glass fiber
8*	Seat	
9	Nut	AISI 304
10	Washer	
11	Stud	
12	Packing nut	
13	Washer	
14	Handle nut	
15	Handle	
16	Locking device	Plastic
17	Handle cover	

3 PIECES STAINLESS STEEL BALL VALVE FLANGED PN40 INITIAL RANGE

SIZE (in mm) :

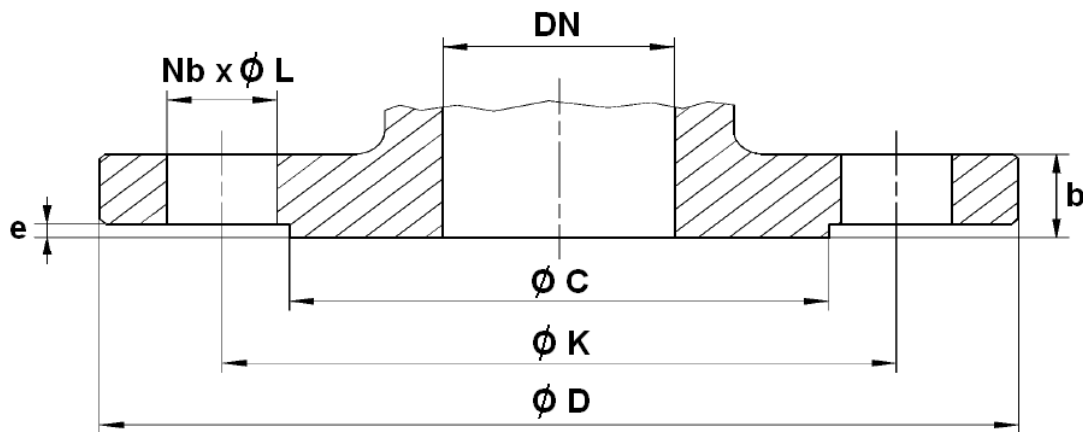


Stem size :

DN	15	20	25	32	40	50	65	80	100
Ø D	15	20	25	32	38	50	64	76	100
L	130	150	160	180	200	230	290	310	350
B	23.3	28.6	34	44	51	63	84.3	94.7	119.2
E	129	129	143	143	170	170	254	254	320
H	77	82	92	98	109	120	142	152	176
C	5	5	6.5	6.5	8.5	8.5	9.8	9.8	16
Ø Y	M8	M8	M10	M10	M12	M12	M14	M14	M20
Ø T	43	51.5	58	70	81.5	101	136	157	195.5
T1	57.5	66	74.5	86.5	100.5	121.5	161	185	226.5
Weight (Kg)	2.05	2.68	3.36	5	6.4	8.94	15.1	20.42	30.71
Ref.	731015	731020	731025	731032	731040	731050	731065	731080	731100

3 PIECES STAINLESS STEEL BALL VALVE FLANGED PN40 INITIAL RANGE

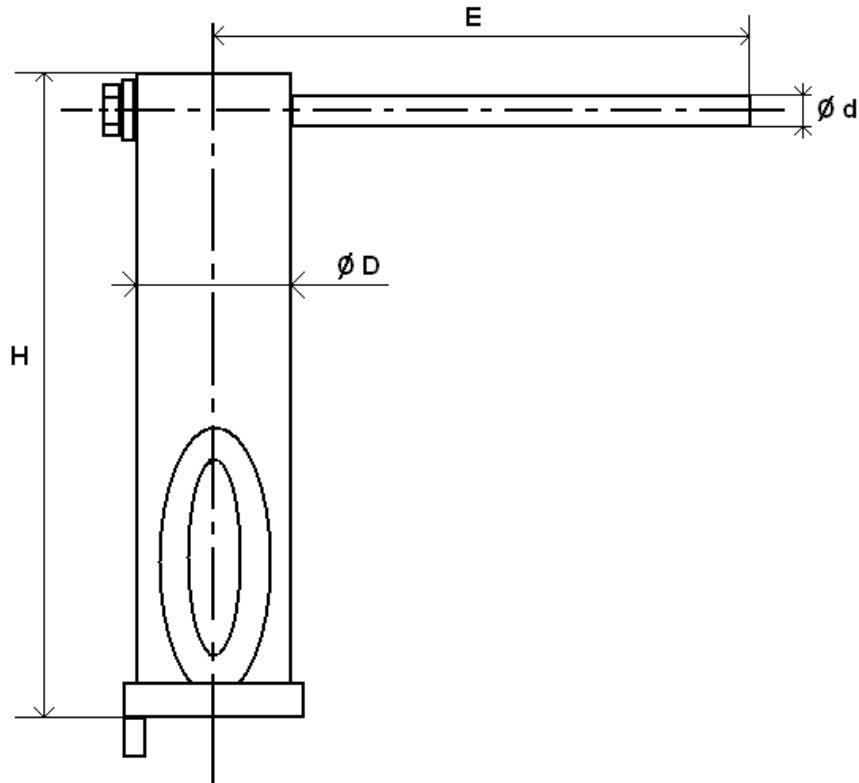
FLANGES SIZE (in mm) :



DN	15	20	25	32	40	50	65	80	100
Ø C	45	58	68	78	88	102	122	138	162
Ø D	95	105	115	140	150	165	185	200	235
Ø K	65	75	85	100	110	125	145	160	190
Nb x Ø L	4 x 14	4 x 14	4 x 14	4 x 18	4 x 18	4 x 18	8 x 18	8 x 18	8 x 22
b	16	18	18	18	18	20	22	24	24
e	2	2	2	2	2	3	3	3	3

3 PIECES STAINLESS STEEL BALL VALVE FLANGED PN40 INITIAL RANGE

STEM EXTENSION SIZE (in mm) :



DN	15	20	25	32	40	50
H	126.3		126.3		128	
E	124		157.8		188.5	
Ø D	28		32		36.5	
Ø d	12		14		14	
Weight (in Kg)	0.34		0.48		0.62	
Ref.	9810612		9810613		9810614	



3 PIECES STAINLESS STEEL BALL VALVE FLANGED PN40 INITIAL RANGE

STANDARDS :

- Manufacturer certified ISO 9001 : 2015
- DIRECTIVE 2014/68/EU : For liquids and gas of Group 1
 - DN15-25 : Article 4, §3 (SEP), no CE marking
 - DN32-100 : Risk Category II, CE 0038 or CE 0343 marking
- Designed according to EN 12516-2
- Certificate 3.1 on request
- Pressure tests according to API 598, table 6
- R.F. flanges according to EN 1092-1 PN40
- Length according to EN 558 series 1 (NF 29355 DIN 3202 F1)

ADVICE : Our opinion and our advice are not guaranteed and SFERACO shall not be liable for the consequences of damages.
The customer must check the right choice of the products with the real service conditions.