

ELECTRIC ACTUATOR UMA 3,5 UMC 10/15

The electric actuators UMA 3.5 and UMC 10/15 are generally used for actuation ¼ turn valves like ball and butterfly valves.

UMA 3.5 : 35 Nm

UMC 10 : 100 Nm

UMC 15 : 150 Nm

MECHANICAL CHARACTERISTICS

Enclosure "AA" nylon
treated carbon steel gears
Manual device with square shaft of 8mm
Position indicator on the top
Mounting pad ISO 5211
Output with star drive

ELECTRICAL CHARACTERISTICS

Thermal torque protection
Electrical connection with PE
2 adjustable limit switches
2 adjustable auxiliary switches
Heating resistance as optional

SERVICE

30% of the time
Maximum 10 starts per hour

LIMITS OF USE

Temperature range: -10°C to +50°C
Protection: IP65

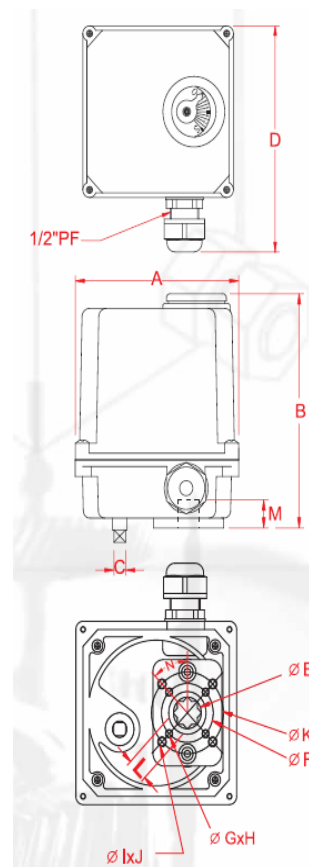
APPROVALS

ISO 9001-CE
CSA- UL429

CONSTRUCTION

Body	Plastic" AA" Nylon 66
Cover	Plastic" AA" Nylon 66
gearbox	Treated Steel gears
Shaft	Chromed steel
Cams	Carbon steel

Data subject to alteration



PRZEDSTAWICIEL
HANDLOWY

"ARMMASTER"

Przedsiębiorstwo Handlowo-Usługowe
Stanisław Zawieja
98-200 Sieradz; ul. E. Orzeszkowej 3
NIP: 827-108-05-12

Biuro handlowe

98-200 Sieradz; ul. Jana Pawła || 59
Tel. / fax (43) 822 32 36
Tel. kom. 602 373 675
www.armaster.com.pl

Réf.: FT
2206GB

Rev.: 0

Page : 1/3

Date : 10/06

ELECTRIC ACTUATOR UMA 3,5 UMC 10/15

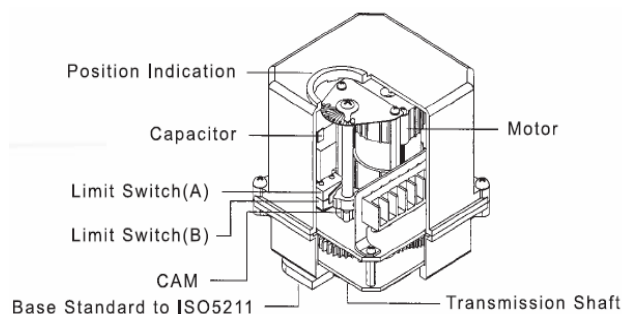
DIMENSIONS

Dimensions (mm)	A	B	C	D	L	M
UMA 3,5	112	144	8	148	14	18.5
UMC 10 - 15	165	165	8	200	17	17.3

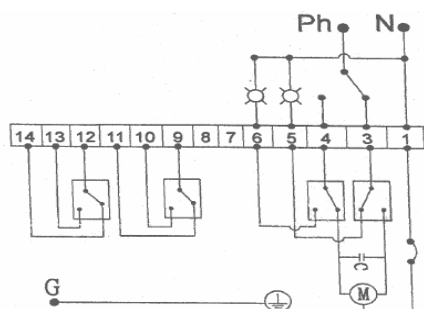
24V Version are 26 mm higher (B+26 mm)

OTHER CHARACTERISTICS

Actuator	Torque (Nm)	Voltage	Time (s)	Power (W)	ISO	Star (mm)
UMA 3,5	35	230 V ac	10	10	F03 / F05	14
	35	24 V ac	15	10	F03 / F05	14
	35	24 V dc	15	10	F03 / F05	14
UMC 10	100	230 V ac	8	18	F07	17
	150	230 V ac	8	18	F07	17
UMC 15	150	24 V ac	8	25	F07	17
	150	24 V dc	8	25	F07	17



WIRING



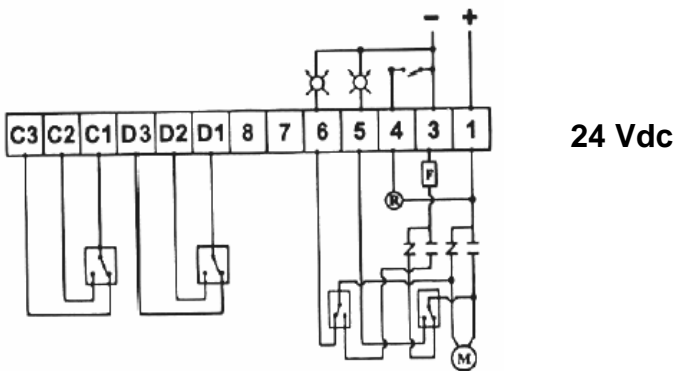
230 Vac
24 Vac

1	Common
3	Opening phase
4	Closing phase
5	Open powered contact
6	Close powered contact
7	Heater
8	Heater
9	Auxiliary Common number one
10	NO Auxiliary contact number one
11	NC Auxiliary contact number one
12	Auxiliary Common number two
13	NO Auxiliary contact number two
14	NC Auxiliary contact number two

Data subject to alteration

ELECTRIC ACTUATOR UMA 3,5 UMC 10/15

sometimes, 9, 10, 11, 12, 13 and 14 may be respectively called D1, D2, D3, C1, C2, C3.



	Wire 1 with +
	Wire 3 with -
	Bridge between 3 and 4 Opening
	Without bridge Closing
5	Open powered contact
6	Close powered contact
7	Heater
8	Heater
D1	Auxiliary Common number one
D2	NO Auxiliary contact number one
D3	NC Auxiliary contact number one
C1	Auxiliary Common number two
C2	NO Auxiliary contact number two
C3	NC Auxiliary contact number two

OPTIONS



ADJUSTMENT OF THE LIMIT SWITCHES

1. The cams are fixed on the main shaft
2. Clockwise rotation = valve will close: the contact stops the motor
3. Counterclockwise rotation = valve will open: the contact stops the motor



"ARMMASTER"

Przedsiębiorstwo Handlowo-Usługowe
Stanisław Zawieja
98-200 Sieradz; ul. E. Orzeszkowej 3
NIP: 827-108-05-12

**PRZEDSTAWICIEL
HANDLOWY**

Biuro handlowe

98-200 Sieradz; ul. Jana Pawła || 59
Tel. / fax (43) 822 32 36
Tel. kom. 602 373 675
www.armaster.com.pl

Data subject to alteration



Réf.: FT
2206GB

Rev.: 0

Page : 3/3

Date : 10/06