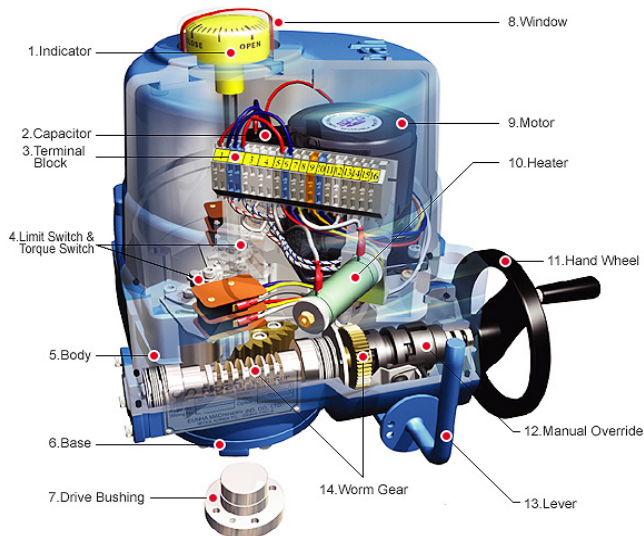


### Actuators NA-NAX



PRZEDSTAWICIEL  
HANDLOWY

"ARMASER"

Przedsiębiorstwo Handlowo-Usługowe  
Stanisław Zawieja  
98-200 Sieradz; ul. E. Orzeszkowej 3  
NIP: 827-108-05-12

Biuro handlowe

98-200 Sieradz; ul. Jana Pawła 11 59  
Tel. / fax (43) 822 32 36  
Tel. kom. 602 373 675  
www.armaster.com.pl

### 1. DESCRIPTION

- 1.1 Electrical actuator for  $\frac{1}{4}$  turn valves.
- 1.2 Complete description on technical data sheet 23100.
- 1.3 Before any use, read carefully this manual.

### 2. GARANTY

- 2.1 Before contacting us, make sure to identify the type of actuator.
- 2.2 The SECTORIEL actuators are guaranteed 12 months after the delivery date. The defective pieces, after our expertise, will be replaced at our own expenses. We will not accept any claim of damage caused by a wrong use or modification of the actuator.

### 3. VERIFICATIONS AT THE DELIVERY

- 3.1 When delivered, check :
  - quality of the package,
  - conformity of the actuator to the ordered one,
  - possible damages.
- 3.2 It is recommended to install the actuator right after the delivery and not to leave it without using it. If the device is stored, it has to be in a dry and sheltered place.

### 4. PRECAUTIONS OF USE

- 4.1 Before installation, please check that there is no depressurisation and that the temperature is normal.
- 4.2 Do not install in an explosive area.
- 4.3 For an indoor and an outdoor installation, the protection class is IP67. Do not immerge the actuator nor install it in a marine area.
- 4.4 Do not connect the actuator to the electricity during the installation or during the maintenance of the valve on the pipe or the actuator on the valve.
- 4.5 Check the input voltage of the actuator before connecting.
- 4.6 Do not install the actuator in parallel with others. If necessary, use relays.
- 4.7 Do not install the actuator on valve with torque bigger than the nominal torque of the actuator.

### 5. INSTALLATION AND USE

- 5.1 Install the actuator on the valve (already done for actuated valve supplied by ourselves).
- 5.2 Do the wiring as indicated below.

# ELECTRICAL ACTUATORS TYPES NA/NAX

## INSTALLATION AND MAINTENANCE MANUAL

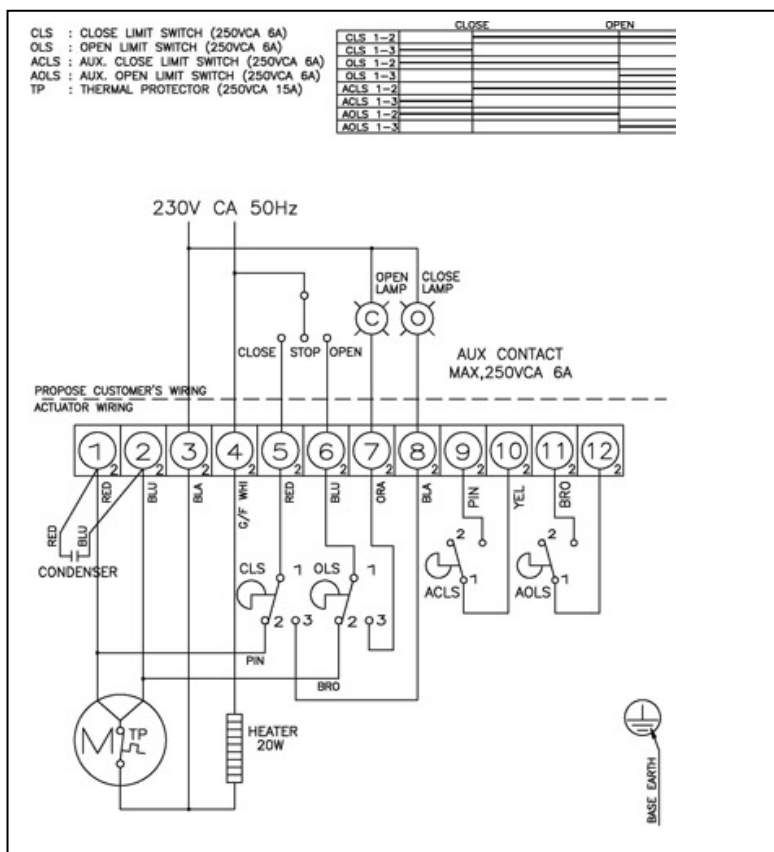
5.3 Adjust the end switches (already done for actuated valve supplied by ourselves).

5.4 Check the move of the valve with the window on the cover.

5.5 The NA/NAX actuator can be clutched and declutched under voltage: to select the manual gear, engage first the lever 13 then use the handwheel 12.

### 7. CONNECTING SKETCH

Wiring for 230V 50Hz (NA06-NA09)



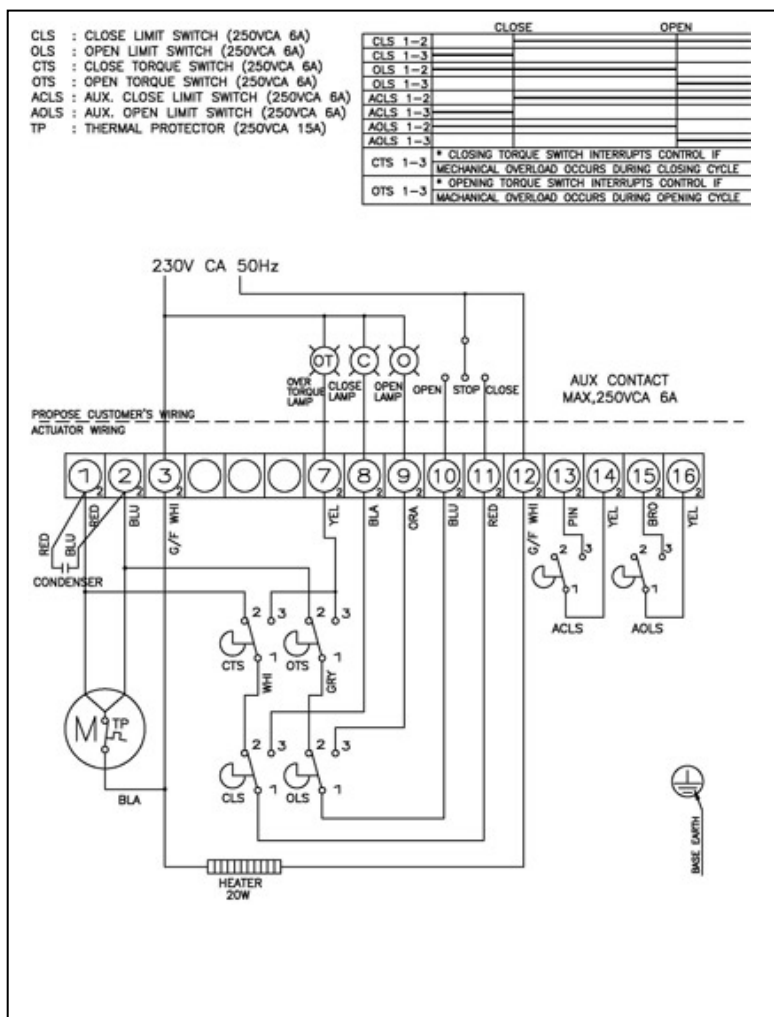
1	Do not use
2	Do not use
3	Common
4	Phase
5	Control closing
6	Control opening
7	Opening indicator (suggestion)
8	Closing indicator (suggestion)
9	Auxiliary switch closing
10	Auxiliary switch closing
11	Auxiliary switch opening
12	Auxiliary switch opening

Informations données à titre indicatif et sous réserve de modifications éventuelles

# ELECTRICAL ACTUATORS TYPES NANAX

## INSTALLATION AND MAINTENANCE MANUAL

Wiring for voltage 230V 50Hz (other types)



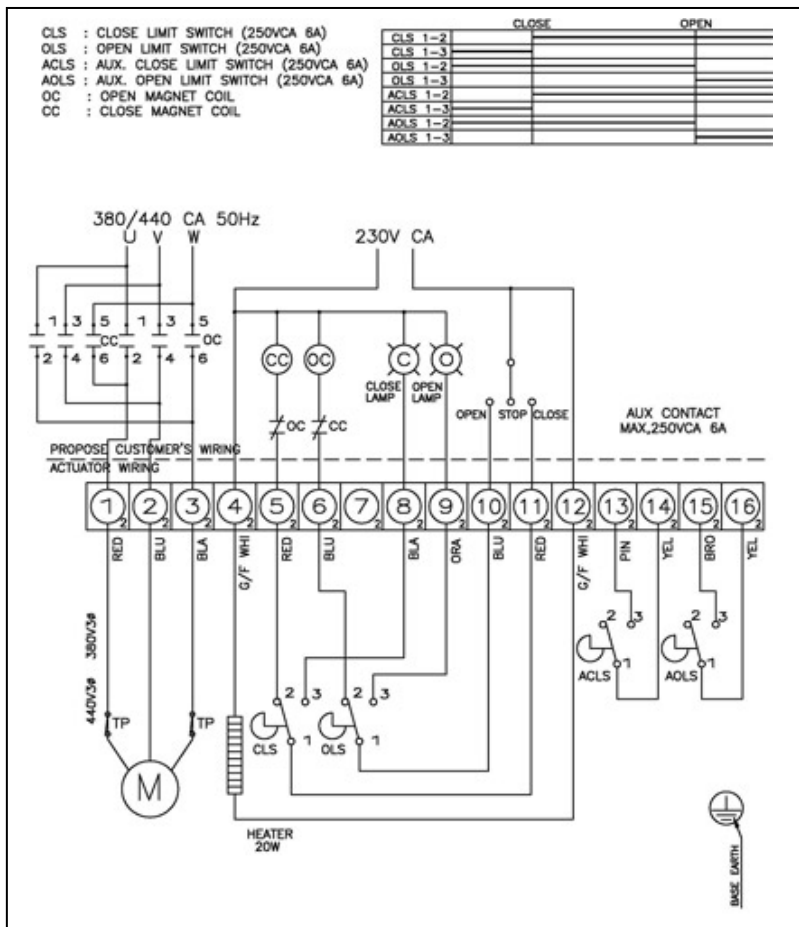
1	Do not use
2	Do not use
3	Common
7	Surcharge indicator (suggestion)
8	Closing indicator (suggestion)
9	Opening indicator (suggestion)
10	Control opening
11	Control closing
12	Phase
13	Auxiliary switch closing
14	Auxiliary switch closing
15	Auxiliary switch opening
16	Auxiliary switch opening

Informations données à titre indicatif et sous réserve de modifications éventuelles

# ELECTRICAL ACTUATORS TYPES NANAX

## INSTALLATION AND MAINTENANCE MANUAL

Wiring for voltage 380V 50Hz (NA06-NA09)



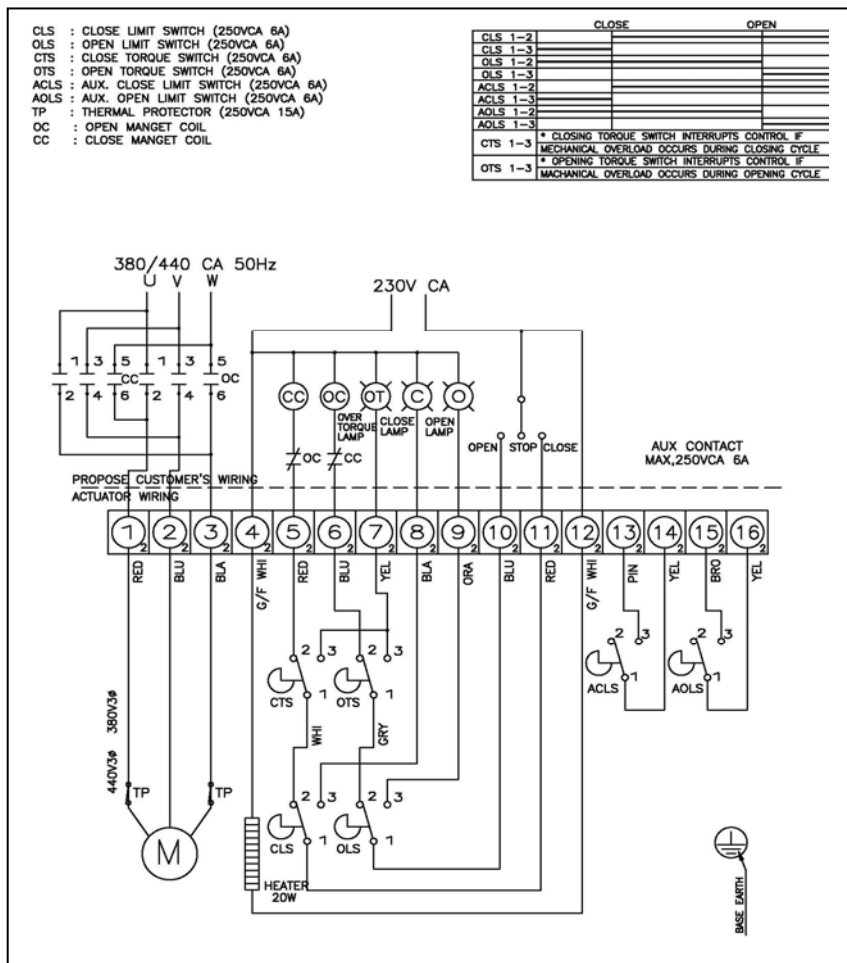
1	Phase U
2	Phase V
3	Phase W
4	Resistance input
5	Connected to closing 11
6	Connected to opening 10
7	Not used
8	Closing indicator (suggestion)
9	Opening indicator (suggestion)
10	Control opening
11	Control closing
12	Resistance input
13	Auxiliary switch closing
14	Auxiliary switch closing
15	Auxiliary switch opening
16	Auxiliary switch opening

Informations données à titre indicatif et sous réserve de modifications éventuelles

# ELECTRICAL ACTUATORS TYPES NANAX

## INSTALLATION AND MAINTENANCE MANUAL

Wiring for voltage 380V 50Hz (other types)



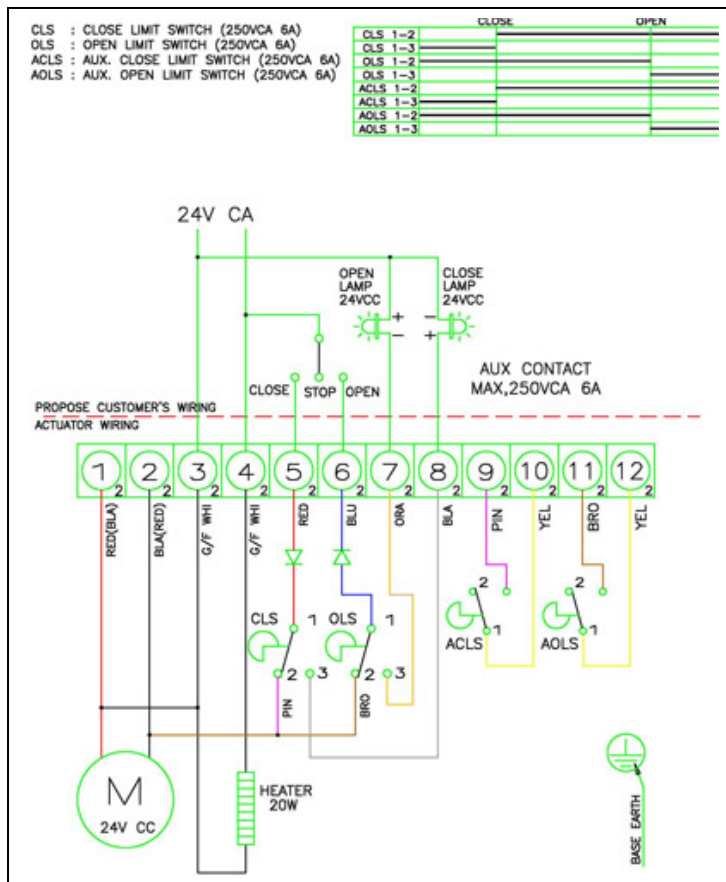
1	Phase U
2	Phase V
3	Phase W
4	Resistance input
5	Connected to closing 11
6	Connected to opening 10
7	Surcharge indicator (suggestion)
8	Cosing indicator (suggestion)
9	Opening indicator (suggestion)
10	Control opening
11	Control closing
12	Resistance input
13	Auxiliary switch closing
14	Auxiliary switch closing
15	Auxiliary switch opening
16	Auxiliary switch opening

Informations données à titre indicatif et sous réserve de modifications éventuelles

# ELECTRICAL ACTUATORS TYPES NAX/NA

## INSTALLATION AND MAINTENANCE MANUAL

Wiring for voltage 24V 50Hz (NA06-NA09)



1	Do not use
2	Do not use
3	Common
4	Phase
5	Control closing
6	Control opening
7	Opening indicator (suggestion)
8	Closing indicator (suggestion)
9	Auxiliary switch closing
10	Auxiliary switch closing
11	Auxiliary switch opening
12	Auxiliary switch opening

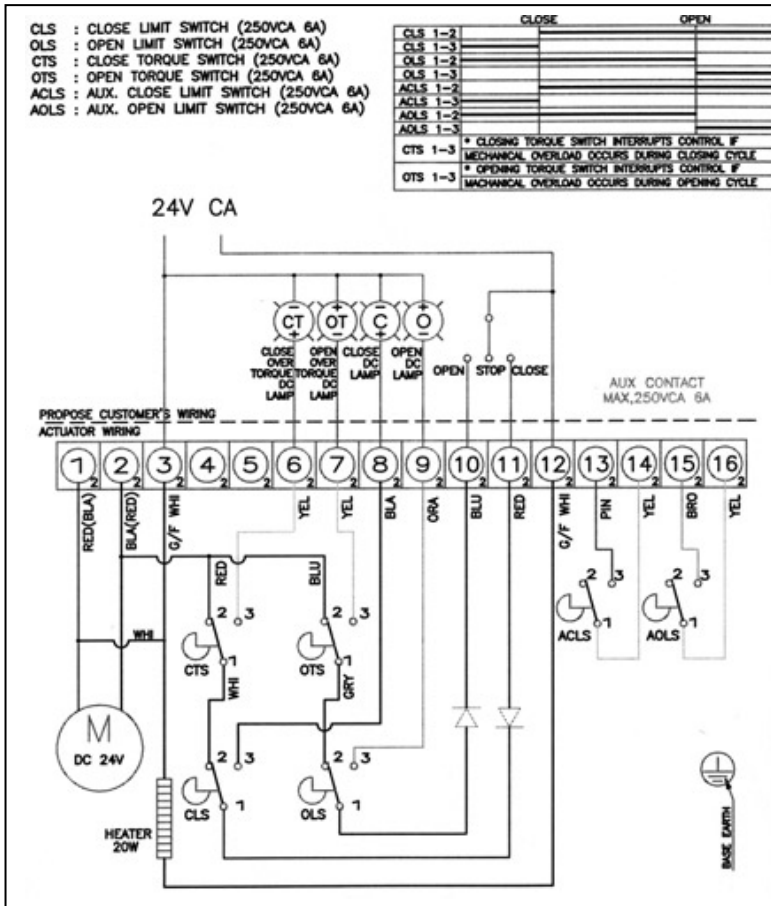
Informations données à titre indicatif et sous réserve de modifications éventuelles



# ELECTRICAL ACTUATORS TYPES NANAX

## INSTALLATION AND MAINTENANCE MANUAL

Wiring for voltage 24V 50Hz (other types)



1	Do not use
2	Do not use
3	Common
4	Not used
5	Not used
6	Surcharge indicator (suggestion)
7	Surcharge indicator (suggestion)
8	Closing indicator (suggestion)
9	Opening indicator (suggestion)
10	Control opening
11	Control closing
12	Heating resistance
13	Auxiliary closing
14	Auxiliary closing
15	Auxiliary opening
16	Auxiliary opening



"ARMASER"

Przedsiębiorstwo Handlowo-Usługowe  
 Stanisław Zawieja  
 98-200 Sieradz; ul. E. Orzeszkowej 3  
 NIP: 827-108-05-12

PRZEDSTAWICIEL  
 HANDLOWY

Biuro handlowe

98-200 Sieradz; ul. Jana Pawła 11 59  
 Tel. / fax (43) 822 32 36  
 Tel. kom. 602 373 675  
 www.armaster.com.pl

Informations données à titre indicatif et sous réserve de modifications éventuelles



Réf: IME 23100

Rev.: 2

Page : 7/7

Date : 06/08